

A National Experience in Agriculture under H.M.King Bhumiphol's Sufficiency Economy Philosophy: SEP

Regional Knowledge Sharing Consultation

“Sustainable Agrifood Systems for Food Security in the
ASEAN Region” 1-3 May 2017, Bangkok, THAILAND

By Surangsri Wapet

Department of Agricultural Extension: DOAE

**Ministry of Agriculture and Cooperatives: MOAC,
THAILAND**

Today topic for sharing

- **Overview of DOAE, MOAC**
- **Sufficiency Economy Philosophy: SEP translation to the agricultural extension policy and implementation**
- **“Peeraphol farm”, prototype of Integrated farming according to H.M. the King’s initiative**

MINISTRY OF AGRICULTURE AND COOPERATIVES

Office of the Minister

Direction

Production Development

Resource Management for Production

Promotion and Development of Farmers and Cooperative System

Office of the Permanent Secretary

Department of Fisheries

Royal Irrigation Department

Department of Cooperative Auditing

Office of Agricultural Economics

Department of Livestock Development

Land Development Department

Department of Agricultural Extension:DOAE

The National Bureau of Agricultural Commodity and Food Standards

Department of Agriculture

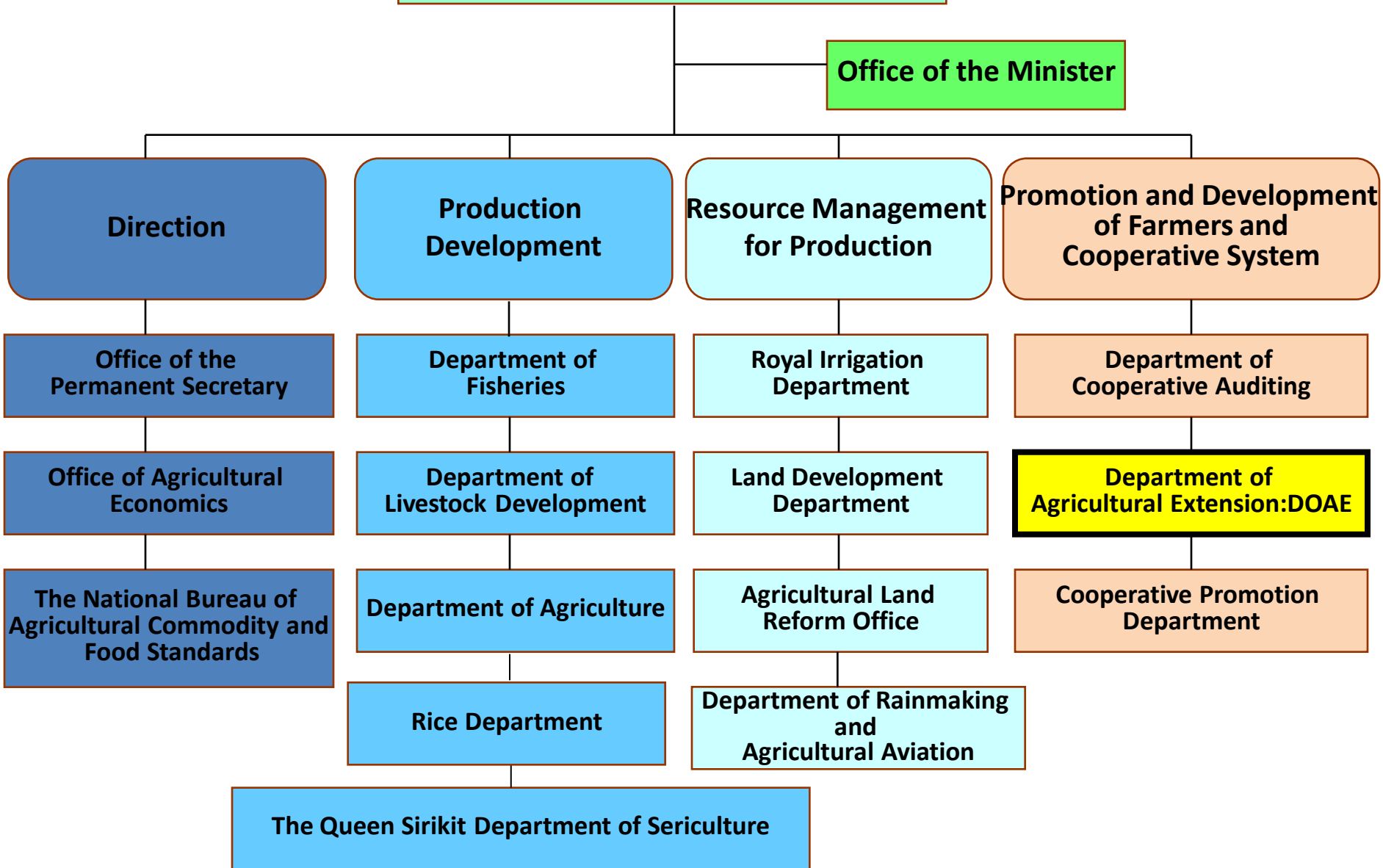
Agricultural Land Reform Office

Cooperative Promotion Department

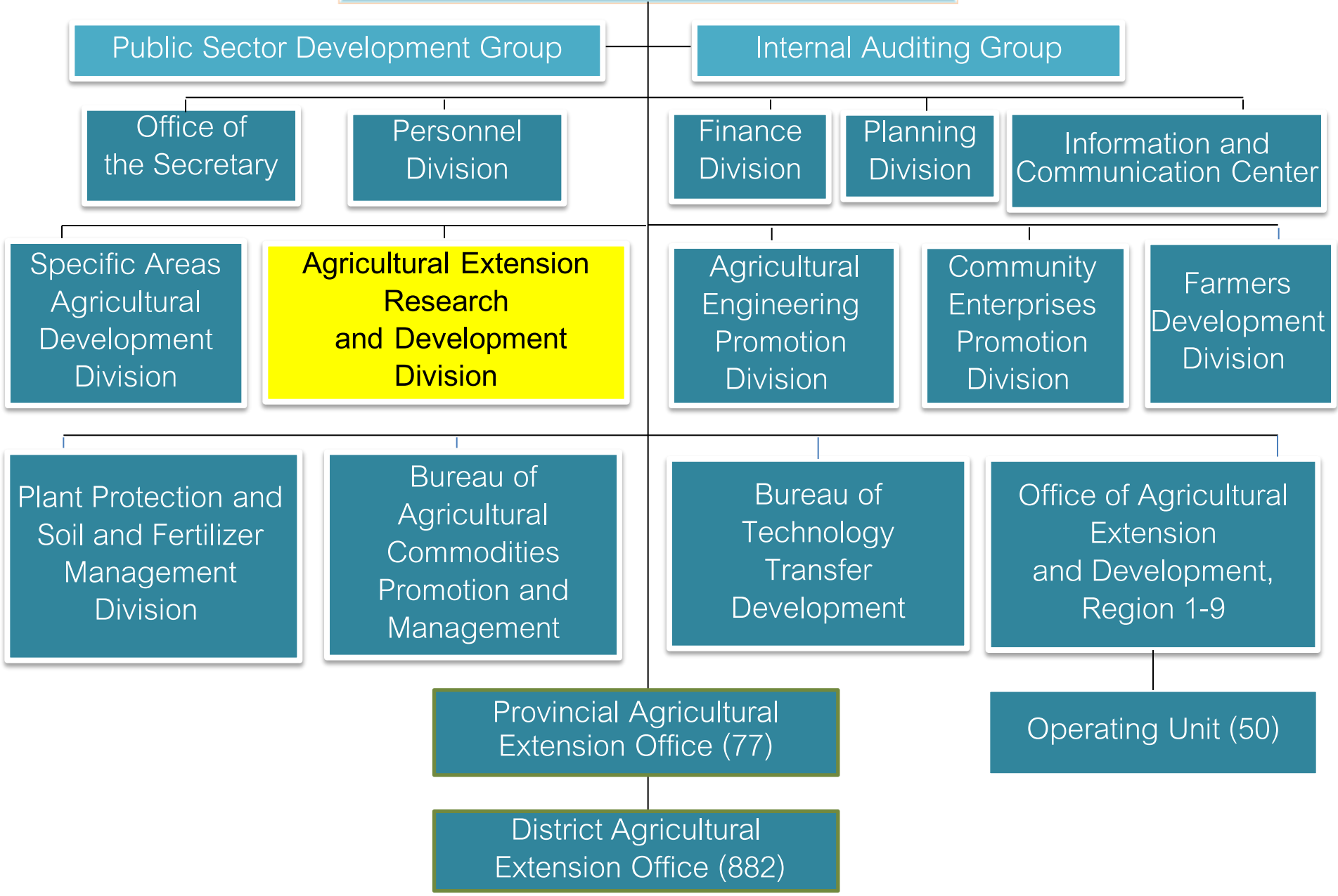
Rice Department

Department of Rainmaking and Agricultural Aviation

The Queen Sirikit Department of Sericulture



DOAE's Organizational Chart



**SUFFICIENCY
ECONOMY
PHILOSOPHY:SEP**

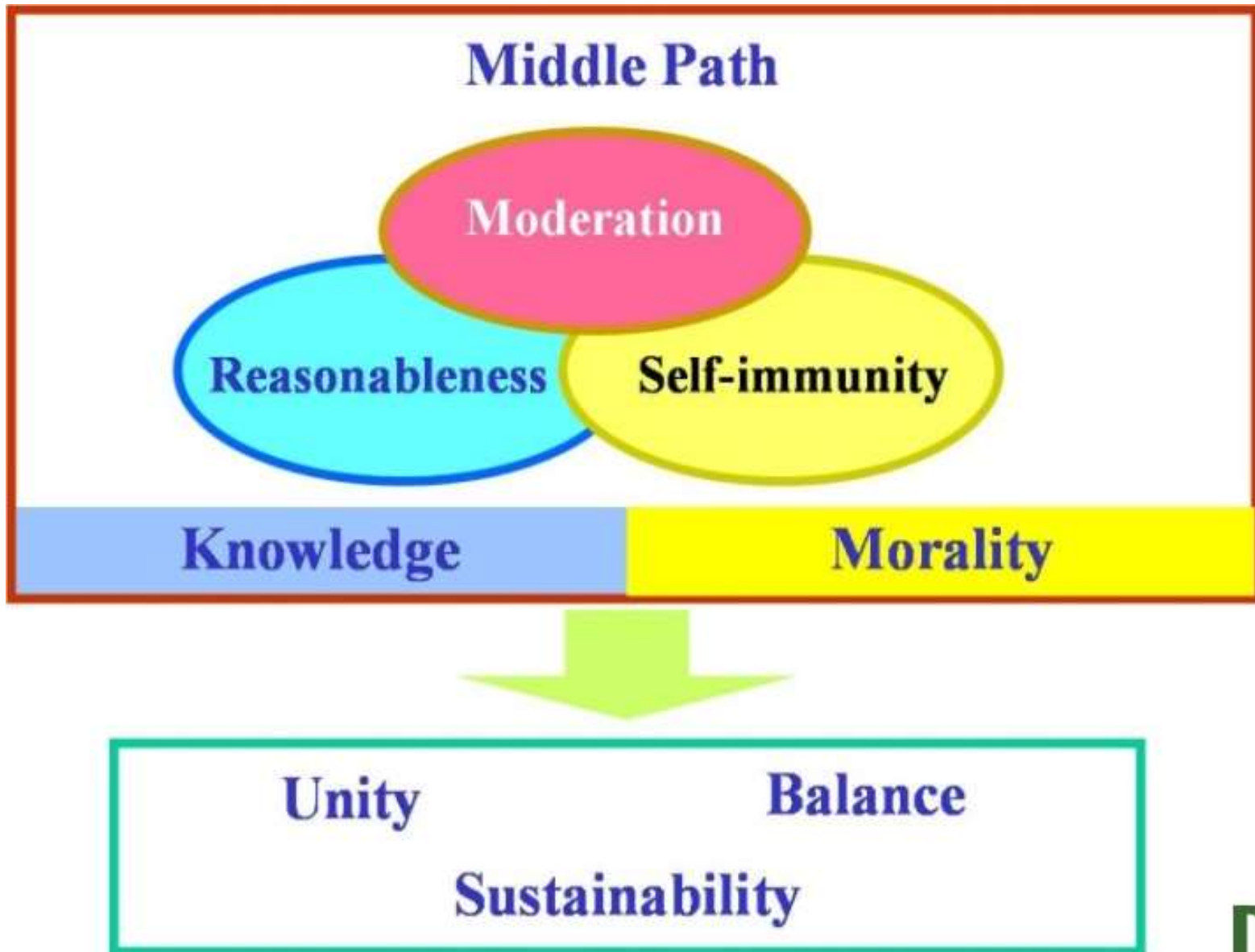


**TRANSLATION TO
THE AGRICULTURAL
EXTENSION POLICY
AND IMPLEMENTATION**

- ***“Sufficiency Economy Philosophy” SEP*** is a philosophy bestowed by his majesty the King Bhumibol to his subject through royal remarks on many occasions more than 25 years.
- ***The philosophy provides guidance on appropriate conduct covering numerous aspects of life.***
- ***After the economic crisis in 1997, His Majesty reiterated and expanded on the SE and the philosophy points the way for recovery that will lead to a more resilient and sustainable economy, better able to meet the challenges arising from globalization and other changes.***

- **Sufficiency** is moderation. If one is moderate in one's desires, one will have less craving. If one has less craving, one will take less advantage of others. If all nations hold this concept of moderation, without being extreme or insatiable in one's desires, the world will be a happier place.
- **SEP** applies to conduct and way of life at individual, family and community levels. At the national level, the philosophy is consistent with a **balanced development strategy** that would reduce the vulnerability of the nation to shocks and excesses that may arise as a result of globalization.

Sufficiency Economy Philosophy :SEP

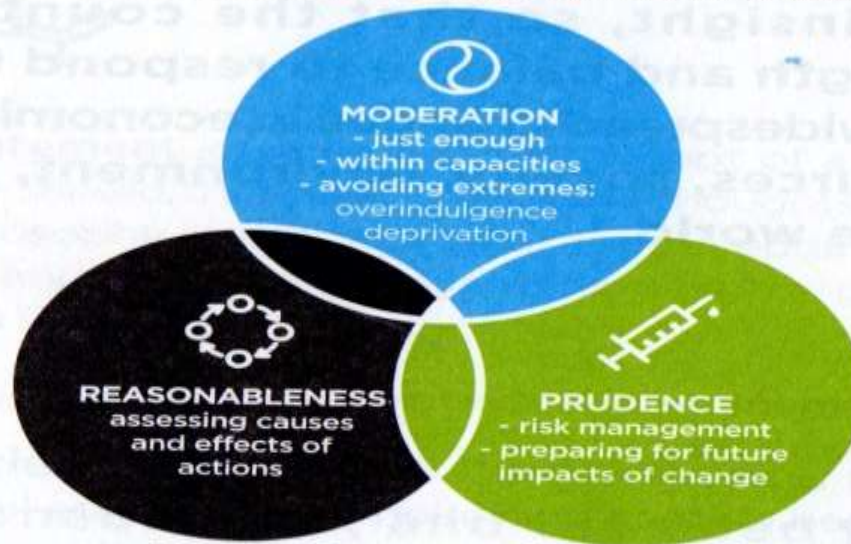


How “SEP” gets us to “Sustainability”

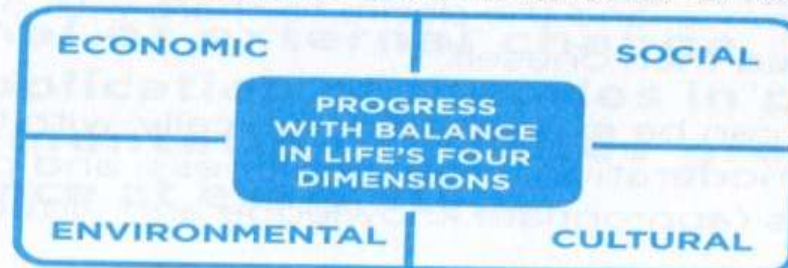
We use our knowledge and virtues in making decisions in our lives:



We use three principles to guide our decision-making:



We aim, as a result of our decisions, to create balance in the four dimensions of life:



Balance in life promotes sustainability for the world.



SEP Translation

- The Royal Thai Government announced the 20-year National strategy covering 2017 to 2036 which envisions Thailand in the next 20 years to reach a state of **prosperity**, **stability**, and **sustainability** based on the adoption of **Sufficiency Economy**.
- The 12th National Economic and Social Development Plan (NESDP) (2017-2021) is the first five-year plan for implementing the 20-year National Strategy. The guiding principles are adoption of **sufficiency economy**, **people centered development**, **UN Sustainable Development Goals (SDGs)**, and **Regional as well as Public-Private Partnership in economic development**.

The goals of the agriculture sector development under the 12th NESDP development goals :

- Inclusive growth **focusing on rural development**
- Restructured agriculture **value chain** with value adding for agricultural competitiveness while preserving the environment
- **Equitable and sustainable** use of natural resources
- Food, energy and water **security**
- Access to **science, technology, research and innovation** for products and process development while **integrating local wisdom**
- Cities and economic **zone management** to strengthen rural economy and well being
- Regional and international **collaboration for standards harmonization**



Goals

Farmers' well-being greatly improved
 1. Social Status (Being proud to be a farmer and socially accepted)
 2. Increased income/ Reduced debt

What is needed to do

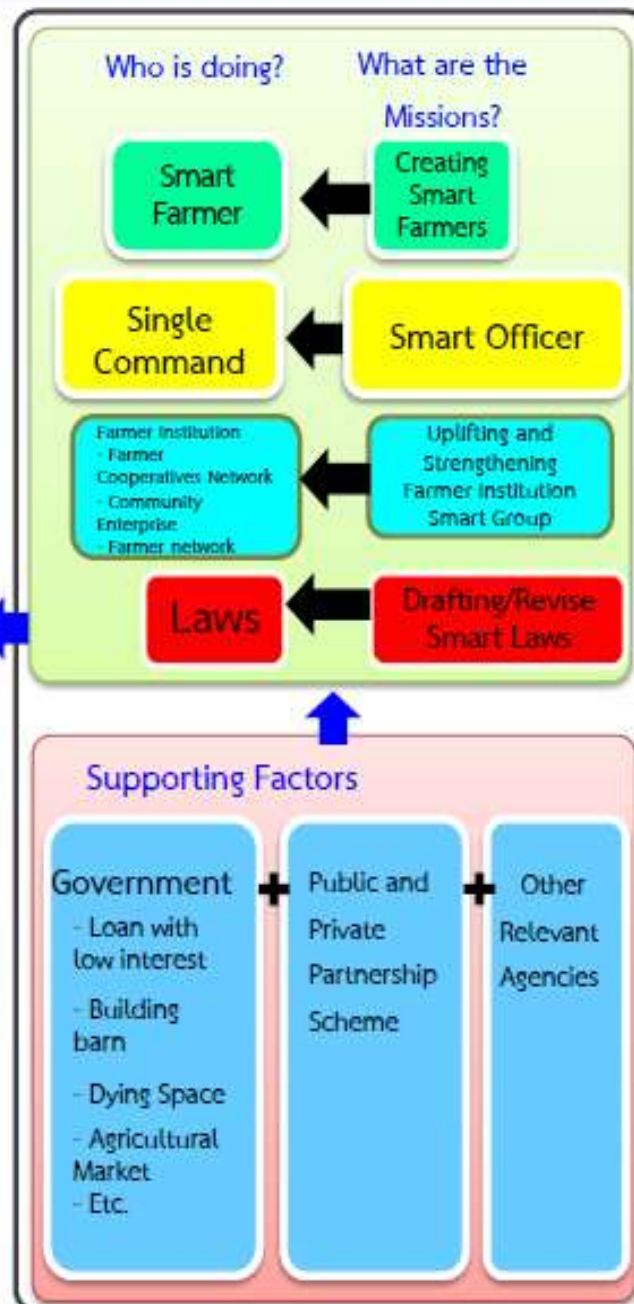
High Quality product recognized and accepted by the market
 Reduced production cost by 20%
 Increase productivity by 20%

Driven by

1. Sufficiency Economy
2. Integration toward AGENDA and AREA
3. Technological Advancement/ Innovation/ Community based knowledge

Ministerial Policy

- Knowledge Learning Center for Improving Agricultural Productivity Efficiency Center (KDC)
- Large Scale Farmland
- Zoning by Agri-Map
- Agricultural standard
- Organic Farming
- Good agricultural practice
- New Agricultural Theory/ Integrated farming
- Agriculture Bank
- Integrated Rice Production Plan
- Land Allocation for farming
- Water discharge/ Water distribution



Remarks

- A4 Paper means Limited Agricultural areas at 149 Million Rai
- Lifting A4 paper means Guiding farmers to achieve the goal by optimizing limited agricultural area

SEP Translation within DOAE

- It's the guidance of the DOAE strategic plan
- Its translated into the development;
 1. The Royal-initiated **village of SE**: HRH Princess Maha Chakri Sirindhorn project
 2. The **SE Learning Center** of DOAE
 3. The **new agricultural theory** promotion project
 4. The **integrated farming promotion** project
 5. HRD – **training/e-learning**
 6. Selection the national **outstanding farmer** in integrated farming and awarded during the Royal Ploughing Ceremony
 7. **Collaborate** with Royal Development Study Centres for technology transfer, training, study visit etc...

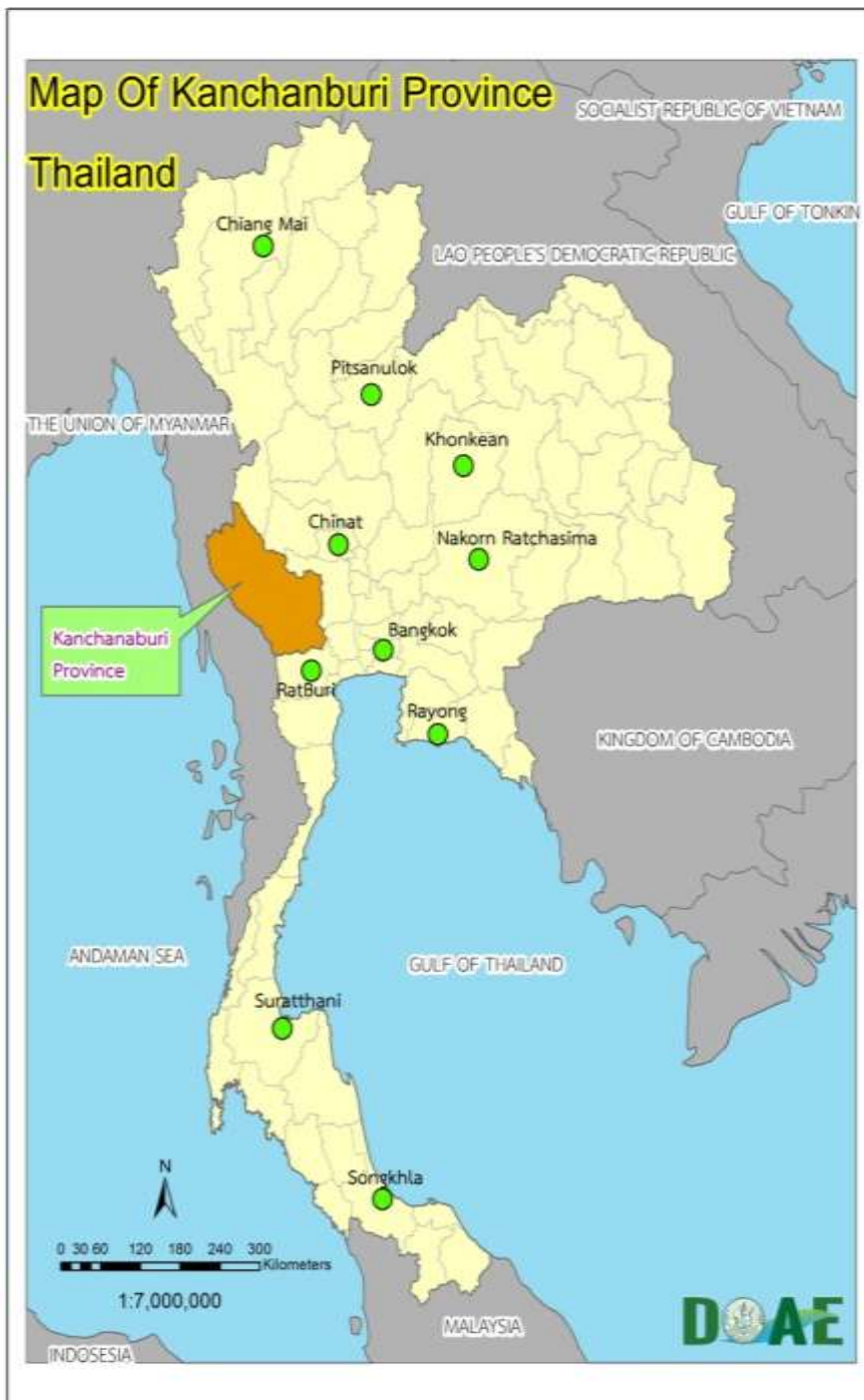
SEP Translation within DOAE

Project	Target/Output
SE villages	24 provinces 90 villages
SE learning center	2,046 centers
New agricultural theory (3rais/household)	77 provinces 70,000 households 210,000 rais
Integrated farming (restructuring rice production : Zoning (N) by agri-map)	71 provinces 25,488 households 101,000 rais
Training/e-learning	Every year
Outstanding farmer selection <small>(1966/52)</small>	Awarded in May

PEERAPHOL FARM; PROTOTYPE OF INTEGRATED FARMING ACCORDING TO H.M. THE KING'S INITIATIVE

- **Mr.Patphong Mongkholkanchanakhun**
- **MOAC smart farmer**
- **The owner of SE center**
- **Awarded by MOAC in 2014 as the outstanding famer in integrated farming**
- **Awarded by FAO in 2014 for his success in integrated farming**
- **Awarded by MOAC in 2016 as the outstanding famer in land development for agriculture**





4. Location of the study:

14°00'15.9"N 99°32'57.2"E

**Kanchanaburi Province
Si Sawat District,
Nong Pet Sub-District,
Tha Thungna Village
@ Peerapol Farm
(Mr. Patphong's farm)**

Map Of Kanchanburi Province

Thailand



Landuse Of Kanchanburi Province

Thailand

** (Landuse Data From LDD 2011) **



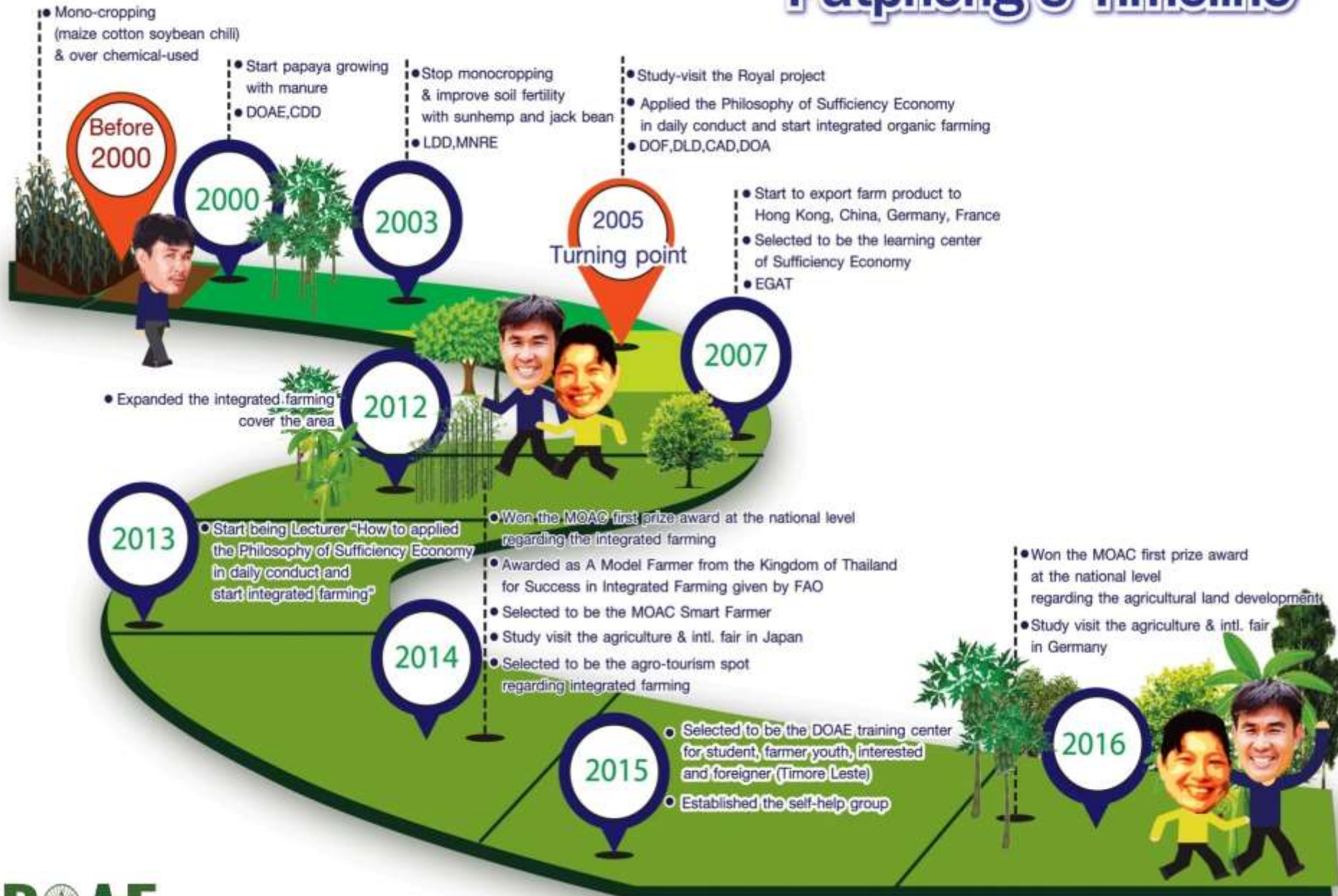
Landuse Map Of Srisawat District Kanchanaburi Province

DOAE

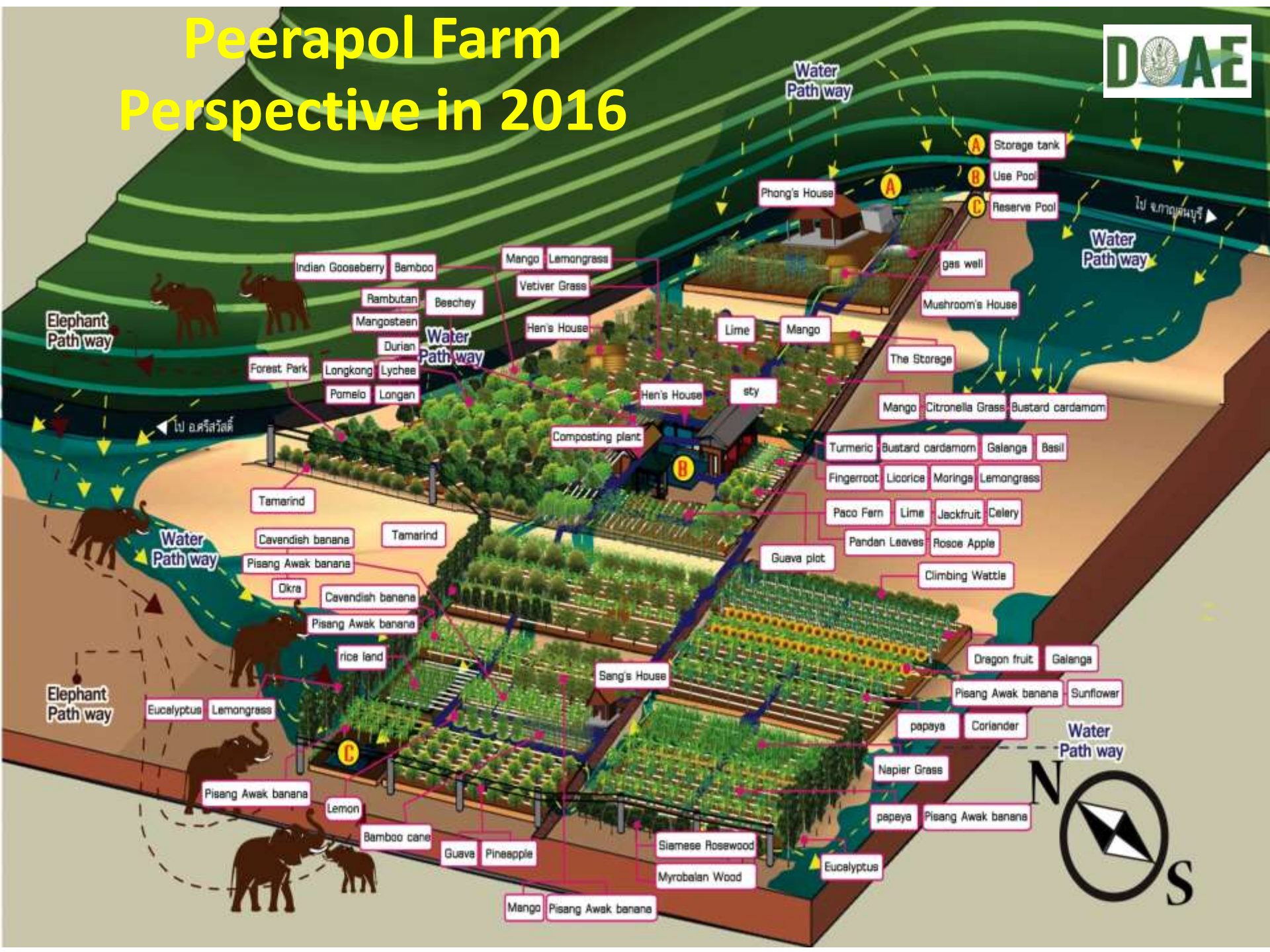


Landuse Data : Land Development Department 2011
 Made by : Information Technology & Communication Center
 Department of Agricultural Extension
 December 2013

Patphong's Timeline



Peerapol Farm Perspective in 2016





NINE MAJOR ISSUES OF FARM MANAGEMENT

Nine Major Issues of Farm Management

- 1. Land management**
- 2. Water management**
- 3. Agricultural goods production management**
- 4. Labor management**
- 5. Farm waste management**
- 6. Market management based on 4P**
- 7. Capital and income management**
- 8. Network management**
- 9. Co-existence with wild elephants**

Sufficiency Agriculture : following H.M. the King's Initiatives

A little home well suiting one's status, producing food to feed the family "Sufficiency" bring happiness and peaceful mind. It helps get rid of poverty easily by growing row of peas as an edible fence mixed with zucchini, climbing wattle. The rotation of crops gives a good variety of fresh supplies. A kitchen garden next to the fence is also grown with vegetables including chilli, cucumber, galangal and coriander. Remaining spaces nearby are used for raising poultry for meat and eggs for household consumption and for sale. Free manure is used instead of chemical fertilizer in the backyard. Near the well grow bamboo and fruits such as papaya and Pisang Awak banana. Fish are also kept in the pond. All these lead to the so - called "Sufficiency Agriculture" supporting life best suiting the harsh economic situation. How to live a sufficient life is the key element.

"Being sufficient implies something deeper than its superficial meaning. If the people feel sufficient in what they need, they will be barely greedy, and will then barely take advantage of others. Any country with its people having this concept "that one needs the sense of sufficiency in doing anything, which means being moderate, honest and barely greedy" will be blessed with happiness. Sufficiency may also mean having a large number of things, even luxurious ones, but this must not be acquired by taking advantage of other people"

**H:M. the King, Bhumibol's speech given on the occasion of his birthday anniversary
at Dusidhalai Hall, Dusit Palace, Bangkok, THAILAND
4 December 1998**





Thank you
DOAE MOAC